



Jason Carlson
 Trean Group
 312-604-6404
 jcarlson@treangroup.com

**USDA Export Sales
 Summary for the Period
 Ending 05/24/18
 Sales Commentary**

Corn Export Sales

Corn Weekly Net Sales	993.1
Current % of USDA Est.	96%
Sales per week needed	147
Total Commitments (17/18)	54,465
Outstanding Sales	16,907.3
Weekly Shipments	1,895
Weeks left in Marketing yr.	14

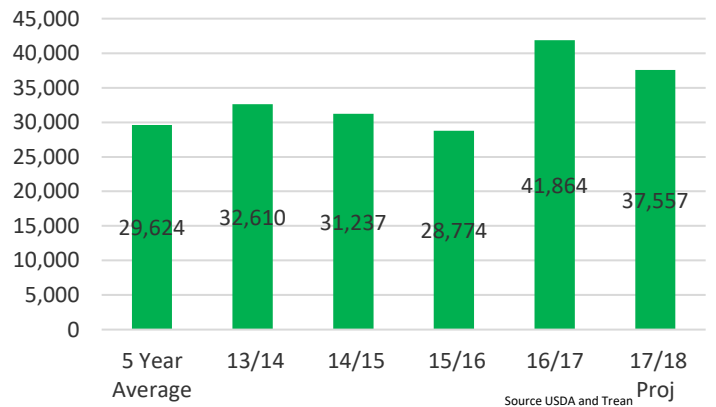
Wheat Export Sales

Wheat Weekly Net Sales	29.5
Current % of USDA Est.	96%
Sales per week needed	0
Total Commitments (17/18)	23,743
Outstanding Sales	1,555
Weekly Shipments	443.1
Weeks left in Marketing yr.	0

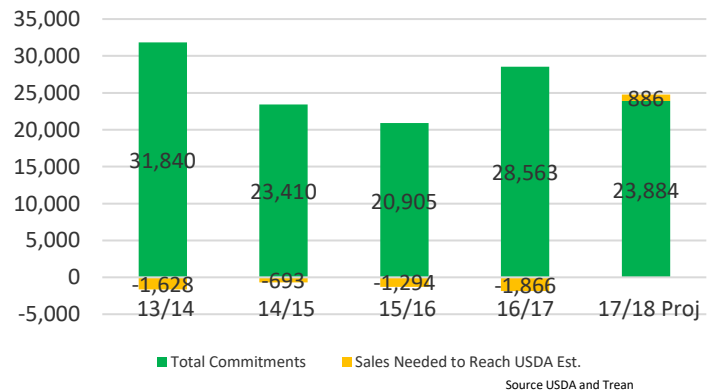
Corn Total Export Commitments for the Current Week in Marketing Year and Sales Needed to Reach Final Estimate in Thousand Metric Tonnes (Rounded)



Corn Accumulated Exports to Date in the Current Marketing Week in Thousand MTs

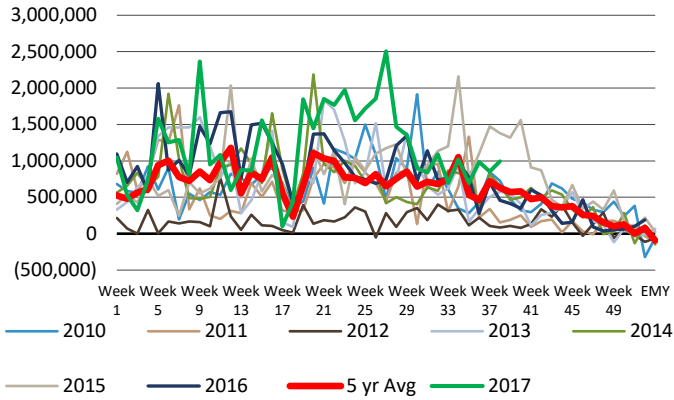


Wheat Total Export Commitments for the Current Week in the Marketing Year and Sales Needed to Reach the Final Estimate in Thousand Metric Tonnes (Rounded)



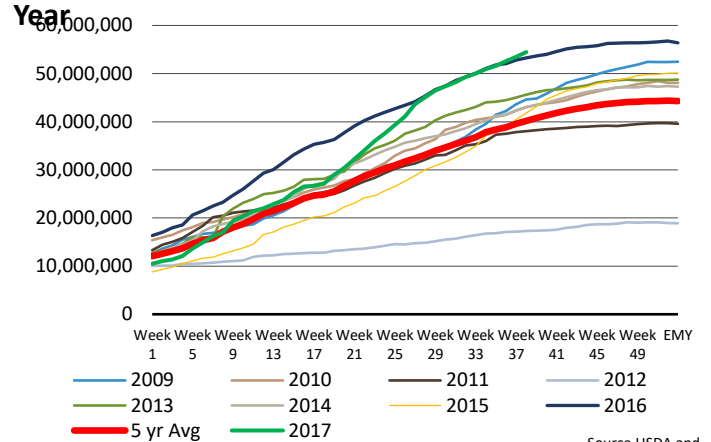
All data from USDA FAS, Bloomberg, and Trean

Corn Weekly Net Sales based on Marketing Year



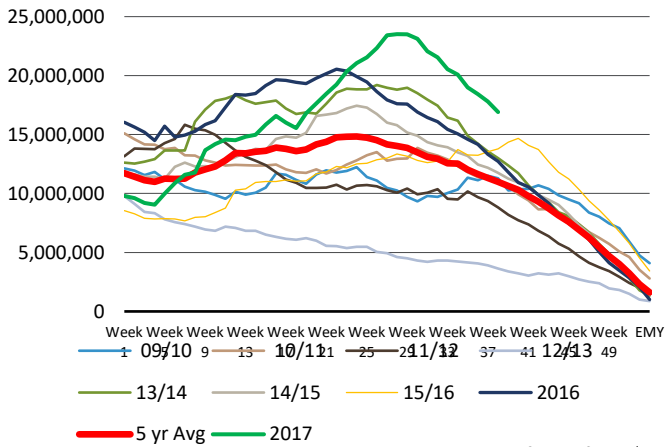
Source USDA and Trean

Corn Total Commitments by Marketing Year



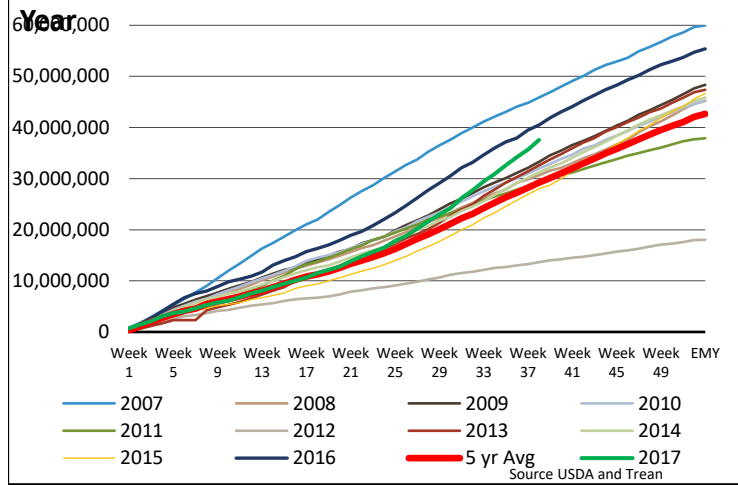
Source USDA and

Corn Outstanding Sales for Marketing Year



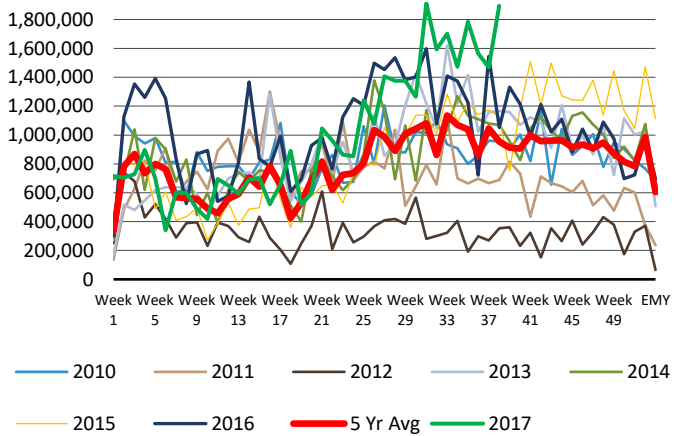
Source USDA and Trean

Accumulated Corn Exports by Marketing Year



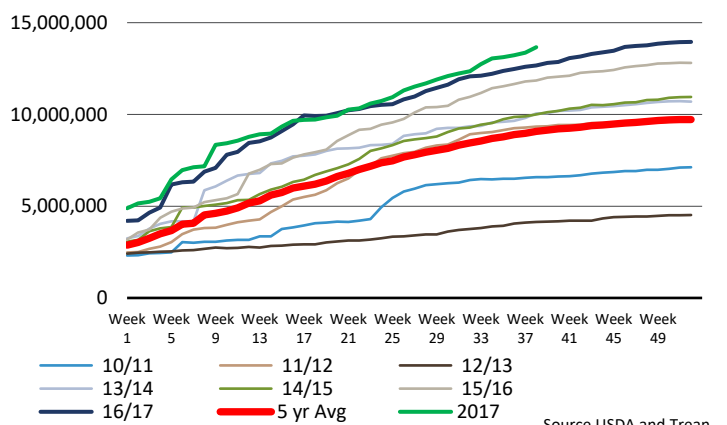
Source USDA and Trean

Corn Weekly Exports by Marketing Year



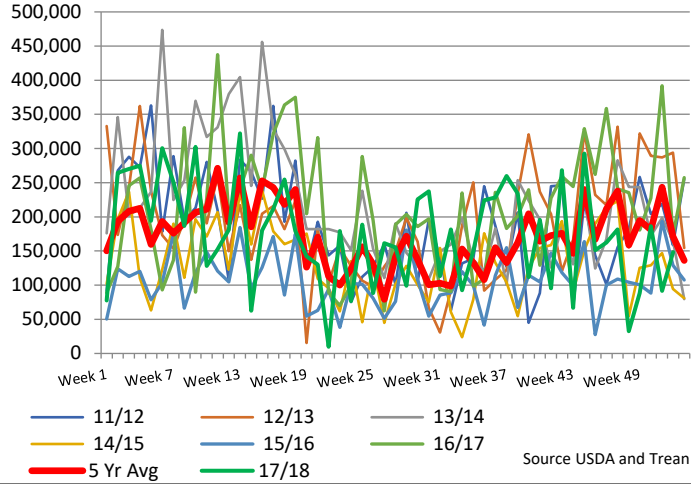
Source USDA and Trean

US Corn Total Commitments to Mexico by Marketing Year in MT

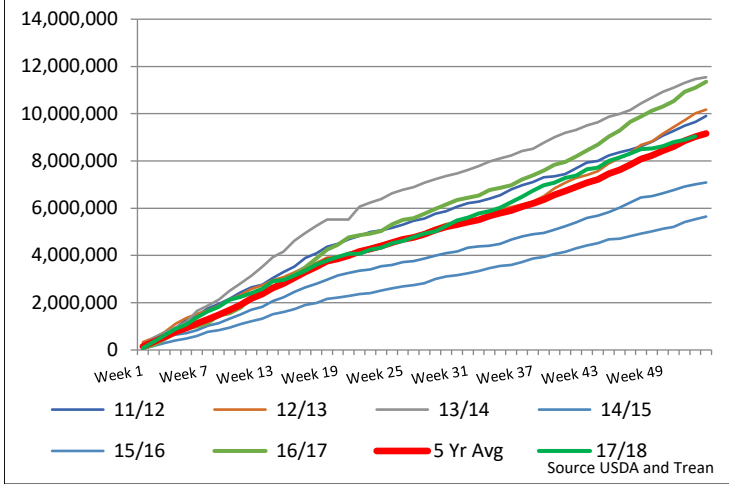


Source USDA and Trean

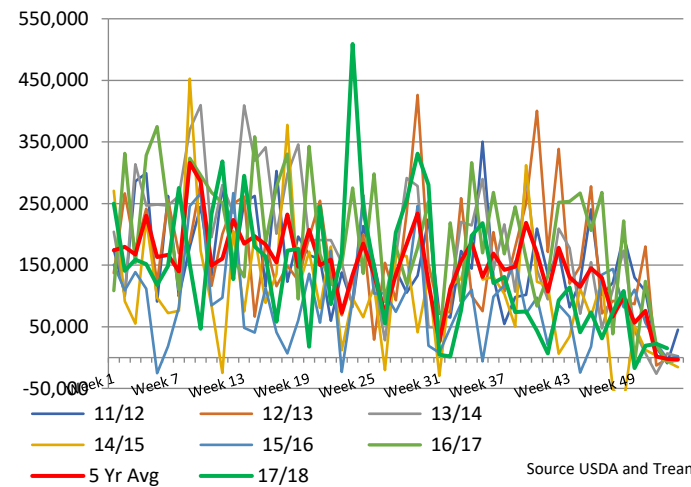
HRW Weekly Exports by Marketing Year



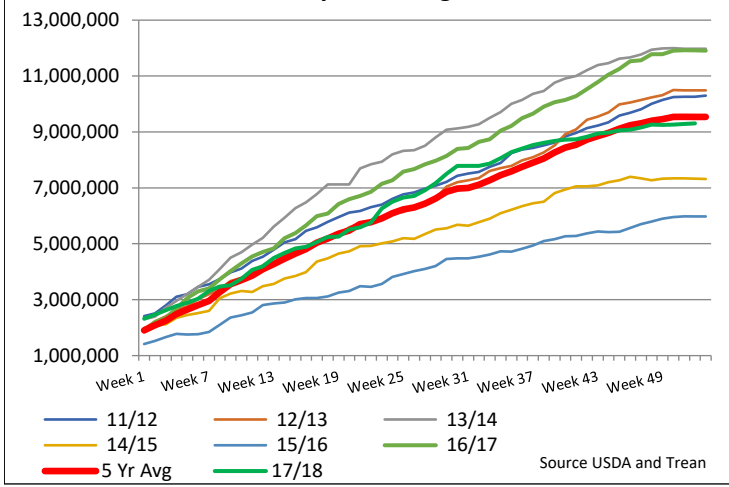
Accumulated HRW Exports by Marketing Year



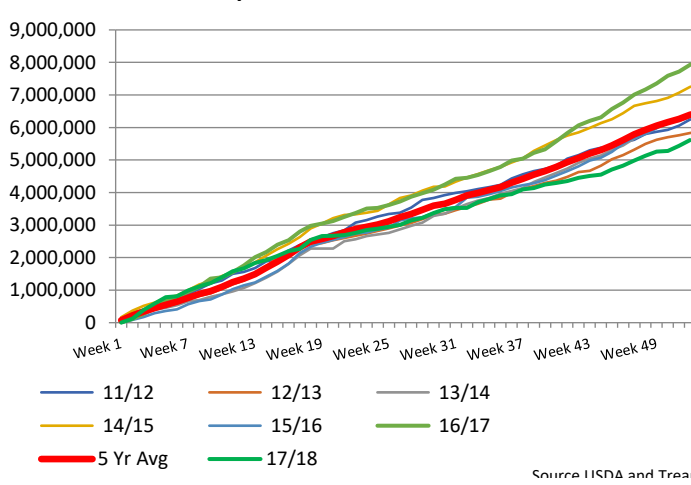
Weekly Net Sales of HRW by Marketing Year



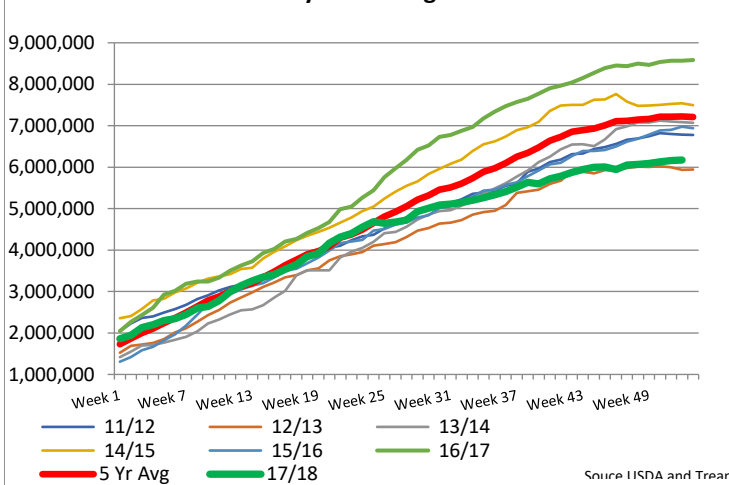
HRW Total Commitments by Marketing Year



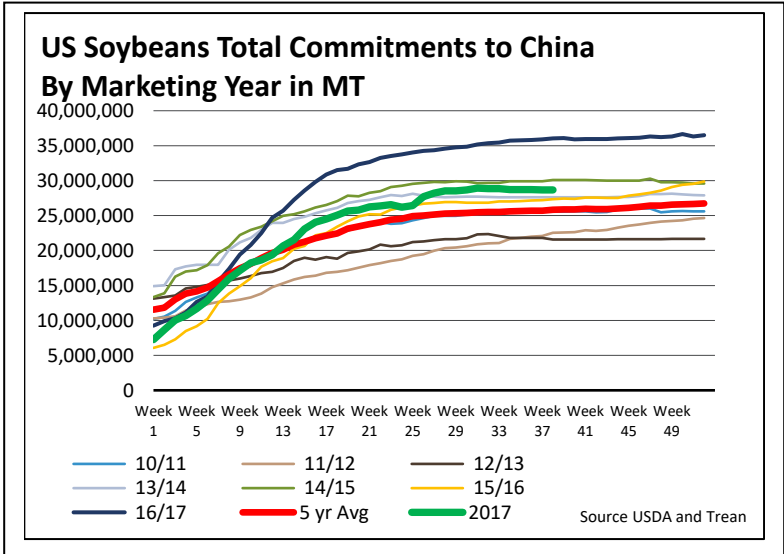
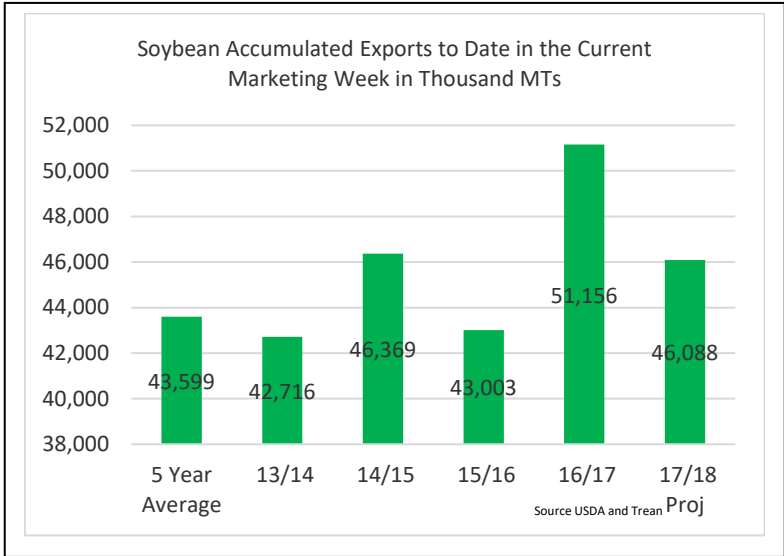
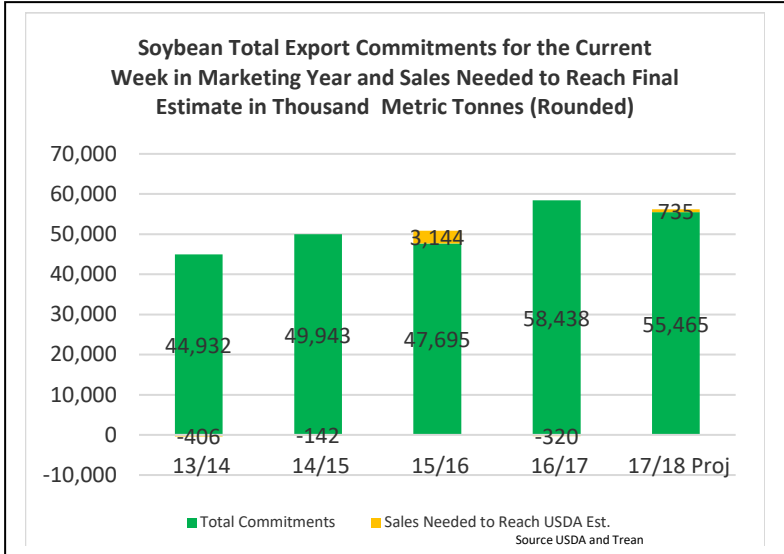
HRS Accumulated Export Sales



HRS Total Commitments by Marketing Year

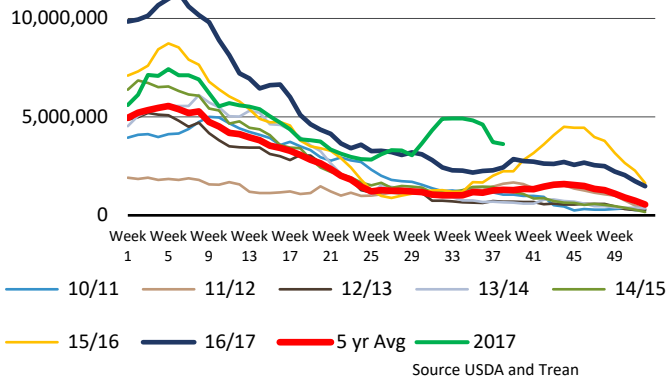


Soybean Export Sales	
Soybean Weekly Net Sales	273.4
Current % of USDA Est.	99%
Sales per week needed	53
Total Commitments (17/18)	55,465
Outstanding Sales	9,377
Weekly Shipments	647.8
Weeks left in Marketing yr.	14
Soybean Meal Export Sales	
Soybean Meal Weekly Net Sales	140.7
Current % of USDA Est.	95%
Sales per week needed	34
Total Commitments (17/18)	10,908
Outstanding Sales	3,028.1
Weekly Shipments	206.2
Weeks left in Marketing yr.	18
Soybean Oil Export Sales	
Soybean Oil Weekly Net Sales	6.0
Current % of USDA Est.	84%
Sales per week needed	9
Total Commitments (17/18)	878
Outstanding Sales	216.0
Weekly Shipments	46.1
Weeks left in Marketing yr.	18

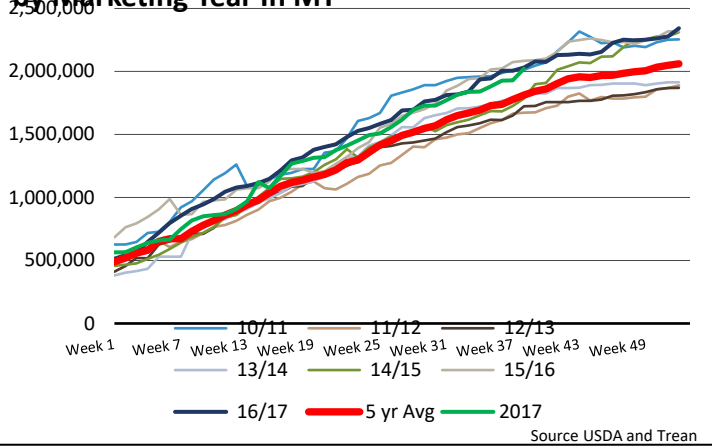


All data from USDA FAS, Bloomberg, and Trean

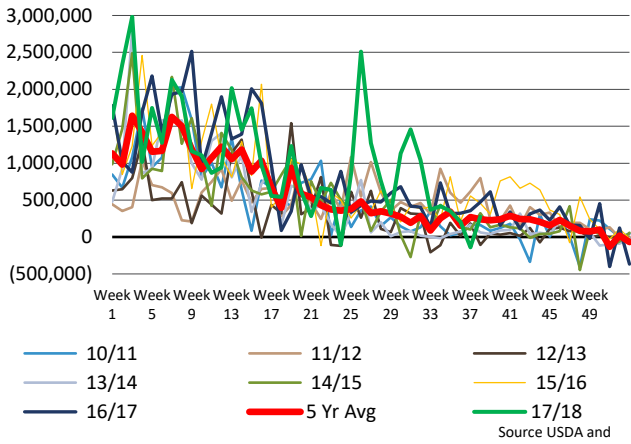
US Soybeans Total Commitments for Unknown by Marketing Year in MT



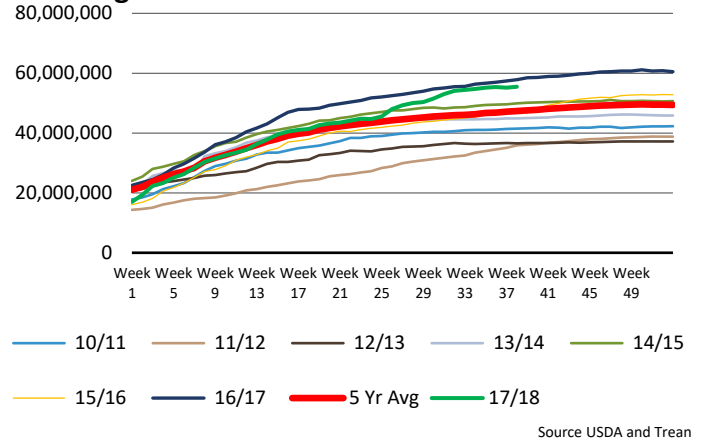
US Soybeans Total Commitments to Japan by Marketing Year In MT



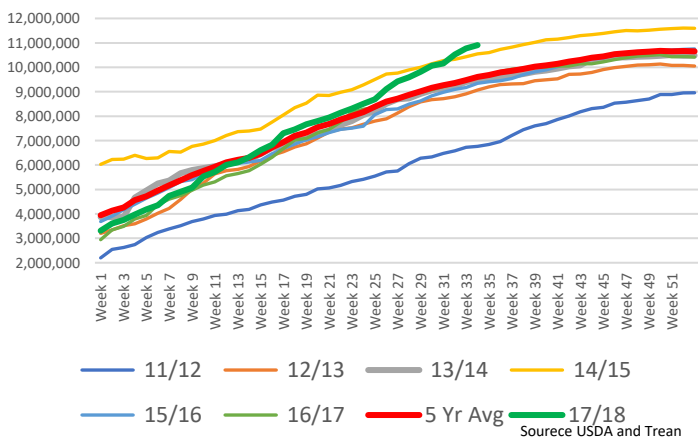
Soybeans Current Marketing Year Net Sales



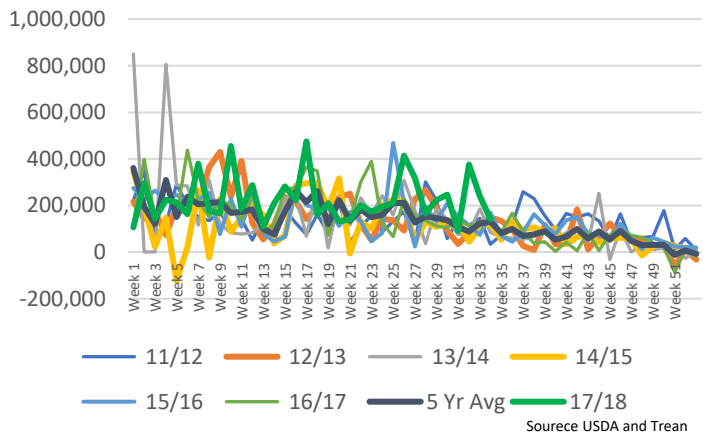
Soybeans Total Commitments by Marketing Year



Soymeal Total Commitments for CMY



Soymeal Net Sales



Trean Group, LLC, with principal office located at 141 W. Jackson, Suite 1201A, Chicago, IL 60604, registered with the National Futures Association (NFA), and including its group companies, shall not be liable for the improper or incomplete transmission of the information contained in this communication, nor for any delay in its receipt or damage to your system. Trean Group, LLC does not guarantee that the integrity of this communication has been maintained or that this communication is free of viruses, interceptions or interference.

This data and these comments are provided for information and distribution only as permitted by law. Any opinions expressed in this document may change without notice and may differ or be contrary to opinions expressed by other areas or groups of Trean Group LLC and its affiliated companies. Investments involve risks, and investors should exercise prudence and their own judgement in making investment decisions. The financial instruments described in the document may not be eligible for sale in all jurisdictions or to certain categories of investors. Options, derivative products and futures are not suitable for all investors, and trading in these instruments is considered risky.

Past financial results are not necessarily indicative of future performance. Neither Trean Group nor any of its directors, employees or agents accepts any liability for any loss (including investment loss) or damage arising out of the use of all or any of the information.